

Cardiovascular Test

Matching –Answers may be used as often as needed. If there’s more than one correct answer, put all of them.

- | | |
|--|--------------------------------|
| <p>_____ 1. The fibrous, protective sac that surrounds the heart.</p> | <p>A) pulmonary</p> |
| <p>_____ 2. Infection of the smooth inner layer that lines the chambers of the heart.</p> | <p>B) tricuspid valve</p> |
| <p>_____ 3. The left side of the heart pumps blood into the ____ circulation.</p> | <p>C) pulse</p> |
| <p>_____ 4. These valves would be open when the atria are contracting. (2)</p> | <p>D) ventricles</p> |
| <p>_____ 5. The serous fluid lubricates these two layers to reduce friction. (2)</p> | <p>E) systemic</p> |
| <p>_____ 6. When the pericardium and the epicardium adhere to each other.</p> | <p>F) aortic semilunar</p> |
| <p>_____ 7. The pressure wave caused by the contraction of the ventricles.</p> | <p>G) pericarditis</p> |
| <p>_____ 8. Valves that do not fit together properly.</p> | <p>H) myocardium</p> |
| <p>_____ 9. Blood going to the lungs leaves the heart through the ____ valve.</p> | <p>I) endocardium</p> |
| <p>_____ 10. Layer of the heart that is made of cardiac muscles.</p> | <p>J) bicuspid valve</p> |
| <p>_____ 11. The “dup” heart sound is caused by the closing of these valves. (2)</p> | <p>K) atria</p> |
| <p>_____ 12. The lining that when infected can cause valves to become stiff.</p> | <p>L) epicardium</p> |
| <p>_____ 13. The right AV valve.</p> | <p>M) incompetent</p> |
| <p>_____ 14. These chambers of the heart are known as pumping chambers.</p> | <p>N) pulmonary semilunar</p> |
| <p>_____ 15. The right side of the heart pumps blood into the ____ circulation.</p> | <p>O) endocaritis</p> |
| <p>_____ 16. This has connective tissue that anchors the heart to the diaphragm and sternum.</p> | <p>P) mitral valve</p> |
| <p>_____ 17. Condition caused by a lack of serous fluid.</p> | <p>Q) parietal pericardium</p> |

True or False

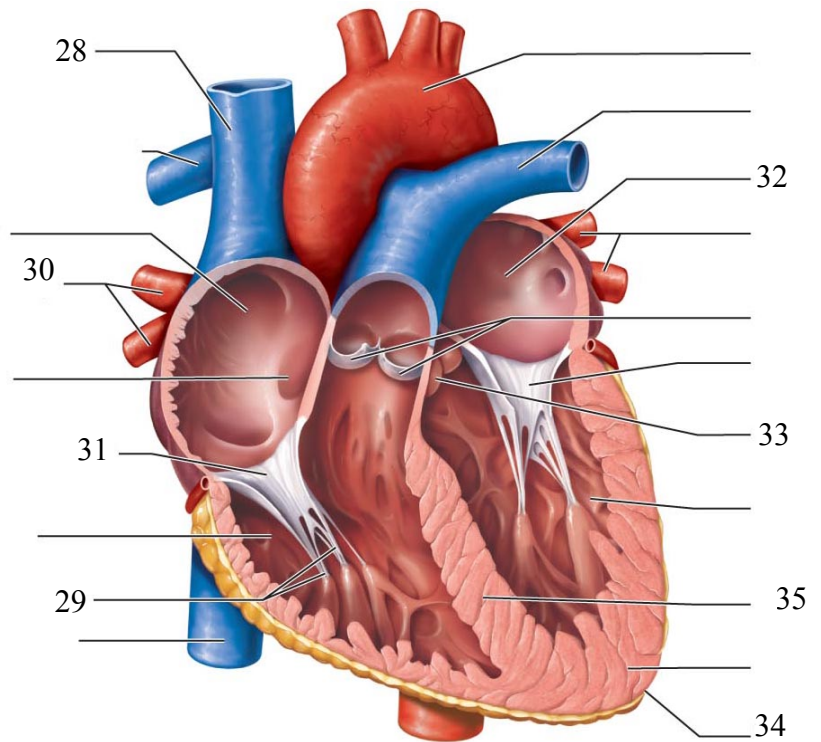
- _____ 17. The chordinae tendinae contract and pull the AV valves to close them.
- _____ 18. The tricuspid valve would be open except when the atria are contracting.
- _____ 19. Pulse sites can be used as pressure points to slow down blood flow from a major injury.
- _____ 20. The left AV valve can also be called the mitral valve.
- _____ 21. The aortic semilunar valve is open except when the ventricles are contracting.
- _____ 22. Pig heart valves may be used to replace human heart valves.
- _____ 23. The closing of the semilunar valves cause the second heart sound.
- _____ 24. The fossa ovalis is the scar tissue from a hole that connected the atria in a fetal heart.
- _____ 25. Valvular stenosis is caused by calcium deposits in the valves.
- _____ 26. The ventricles are the chambers of the heart that receive blood from the body.

Short Answer

27. What condition is caused by endocarditis?

Label the drawing below from your word bank.

- _____ 28.
- _____ 29.
- _____ 30.
- _____ 31.
- _____ 32.
- _____ 33.
- _____ 34.
- _____ 35.



When the blood is pumped out of this chamber it passes through the 36 valve, into the 37, which carry to blood to the lungs. The blood returns from the lungs to the heart through the 38 which bring the blood to the 39. It passes through the 40 valve into the 41. When it is pumped out of this chamber, it passes through the 42 valve into the 43. Various arteries branch off to carry the blood throughout the body eventually passing through capillary beds, before entering veins to return to the heart. Blood returning from the upper body empties into the 44. Returning blood from the lower body empties into the 45. Both of these large veins empty into the 46. The blood then passes through the 47 valve into the 48.

- | | |
|-----------|-----------|
| _____ 36. | _____ 43. |
| _____ 37. | _____ 44. |
| _____ 38. | _____ 45. |
| _____ 39. | _____ 46. |
| _____ 40. | _____ 47. |
| _____ 41. | _____ 48. |
| _____ 42. | |

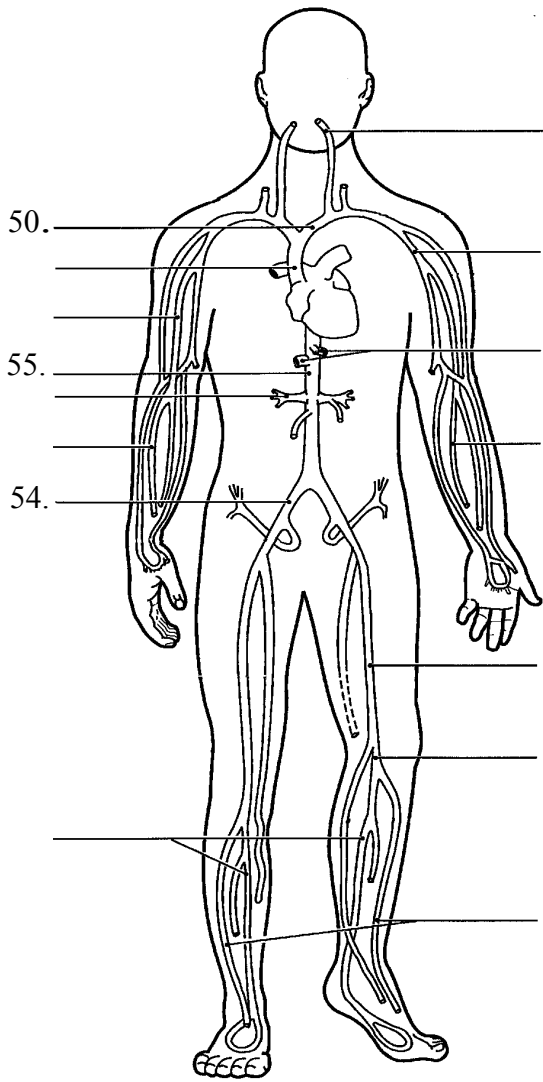


Figure 11-7 Veins

- _____ 49.
- _____ 50.
- _____ 51.
- _____ 52.

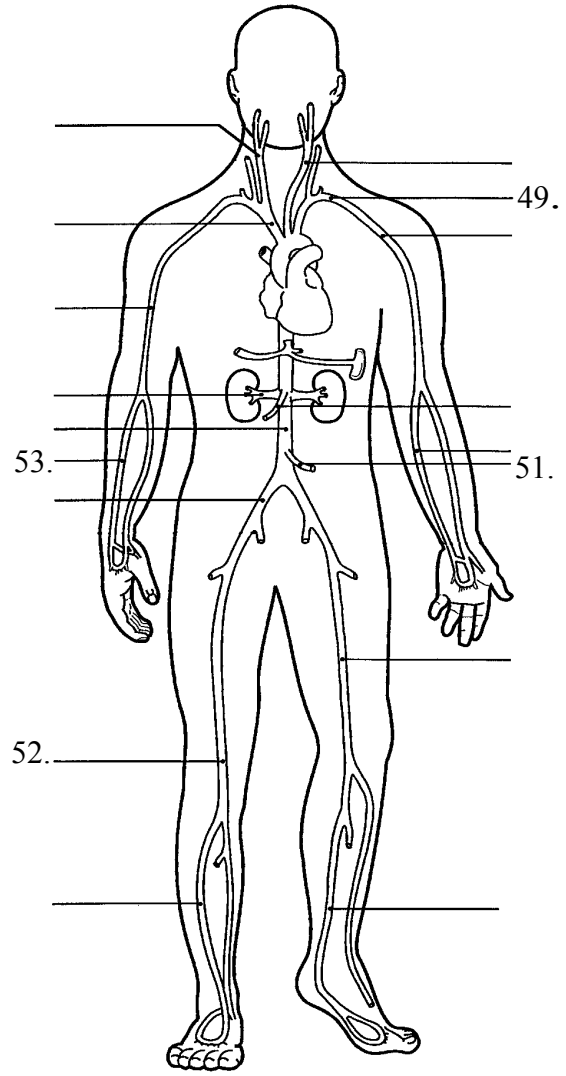
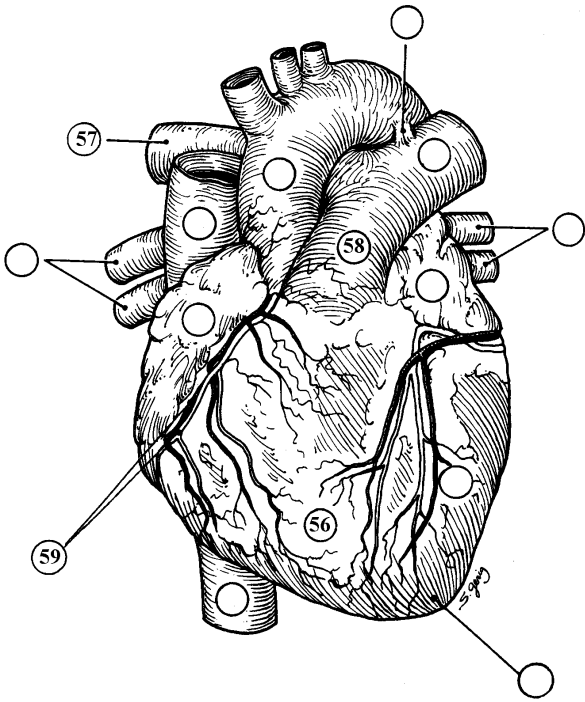


Figure 11-8 Arteries

- _____ 53.
- _____ 54.
- _____ 55.



56. _____

57. _____

58. _____

59. _____

Tell if blood at the following points would O₂-rich or O₂-poor.

60. F

61. B

62. G

Tell if blood at these points would be in the systemic or pulmonary circulation.

63. E

64. H

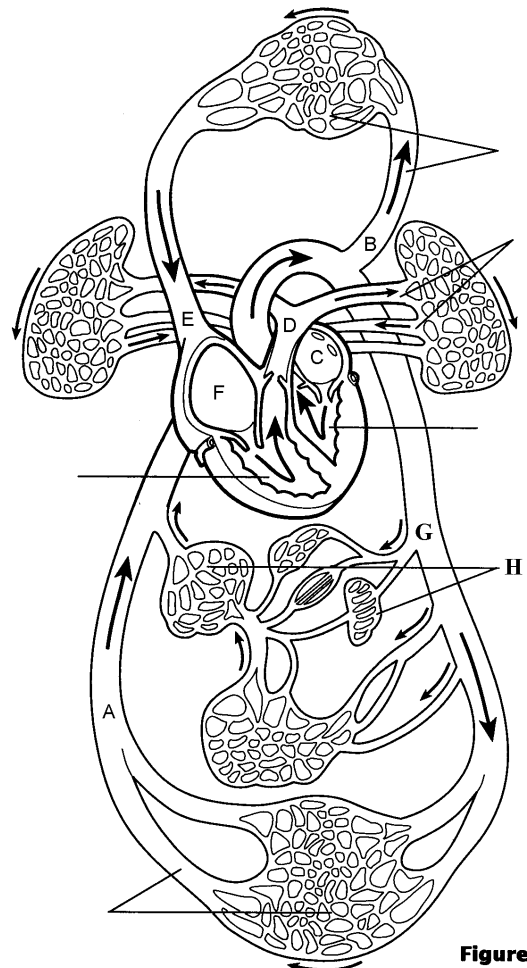


Figure 11-1